



KAUKAUNA AREA SCHOOL DISTRICT LONG-RANGE
FACILITIES PLAN

*BUILT ON TRADITION
FOCUSED ON THE FUTURE*

BUILT ON TRADITION. FOCUSED ON THE FUTURE.



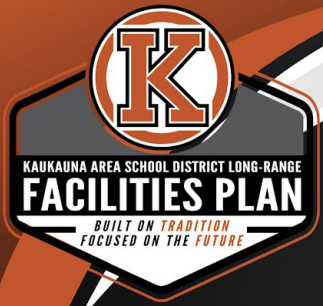
KAUKAUNA AREA SCHOOL DISTRICT LONG-RANGE

FACILITIES PLAN

BUILT ON TRADITION
FOCUSED ON THE FUTURE

Introductions





FINANCE, OPERATIONS & FACILITIES



CATEGORY WEIGHTING

Financial Audit	20%
Fund Balance	20%
MOD Rate	20%
Open Enrollment	20%
Facility Plan - 5 Year	10%
Tech Plan - 5 Year	10%

River View Middle School

Enrollment & Capacity

LEARNING & ACADEMICS



CATEGORY WEIGHTING

State Report Card	45%
College Credit or Work Experience	25%
Reading Growth	10%
Math Growth	10%
Additional Early Learning Skills	5%
Composite	5%

Facility Needs & Aging Buildings

ENGAGEMENT & CONNECTEDNESS

Scoring In Progress

SAFE & HEALTHY SCHOOLS

Scoring In Progress

CATEGORY WEIGHTING

School Safety	25%
Student Behavior	25%
Student Mental Well-Being	25%
Staff Well-Being	25%

Community Child Care Needs

Long Range Facilities Plan

Elementary Grade Level Configuration

CATEGORY WEIGHTING

Student Involvement	25%
Staff Engagement	25%
Attendance	20%
Staff Retention	15%
Stakeholder Satisfaction	15%

Teaching & Learning Goals

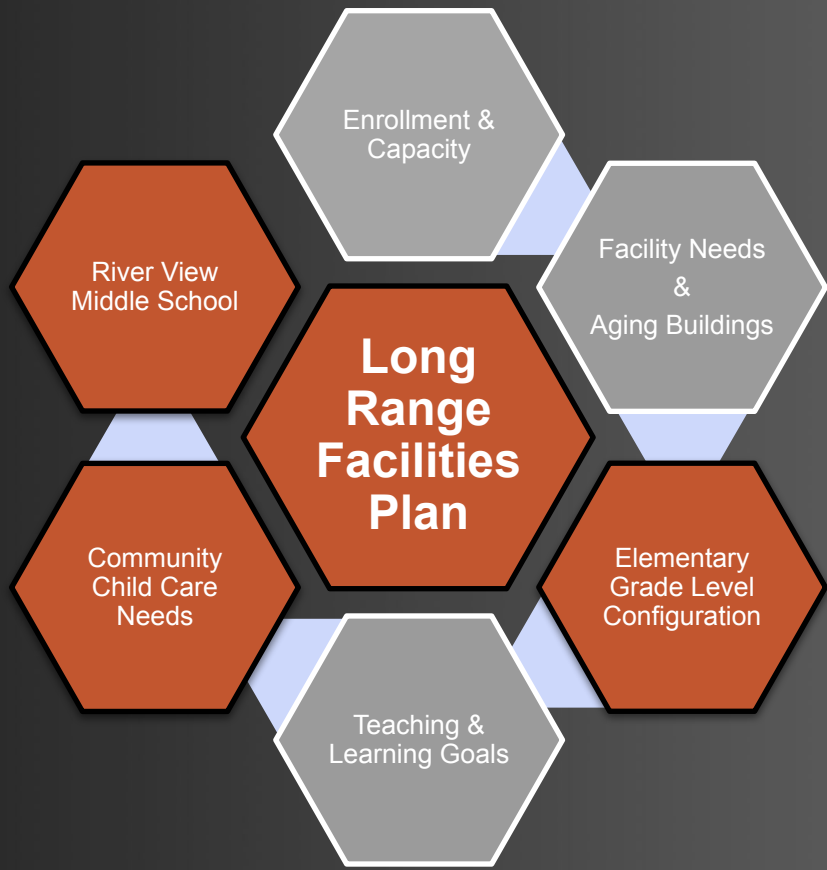
BUILT ON TRADITION. FOCUSED ON THE FUTURE.



KAUKAUNA AREA SCHOOL DISTRICT LONG-RANGE

FACILITIES PLAN

BUILT ON TRADITION
FOCUSED ON THE FUTURE



BUILT ON TRADITION. FOCUSED ON THE FUTURE.

FACILITIES COMMITMENT STATEMENTS

BUILT ON TRADITION. FOCUSED ON THE FUTURE.

IN KASD, WE BELIEVE THAT EVERY DECISION IS GUIDED BY OUR CORE VALUES. AS WE WORK TOGETHER TO DEVELOP A LONG-RANGE FACILITIES PLAN, WE ARE COMMITTED TO PROVIDING OUR STUDENTS, STAFF, FAMILIES, AND COMMUNITY WITH FACILITIES THAT:



WE ARE

STUDENT CENTERED

Promote safe, innovative, engaging, and relevant learning environments in order to ensure that all students learn, grow, and flourish.

RELATIONSHIP FOCUSED

Support the evolving needs of our students and reflect the values and priorities of our community.

WE WILL

BE INTENTIONAL

Align with the District's strategic priorities as outlined in the KASD Continuous Improvement Plan.

ACT WITH INTEGRITY

Demonstrate a commitment to fiscal responsibility and financial sustainability.

WE BELIEVE IN

COLLECTIVE EFFICACY

Demonstrate a commitment to collaborative decision-making and a reflection of the values and priorities of those we serve.

CONTINUOUS IMPROVEMENT

Position KASD to become the premiere destination for excellence in education, student support, and community engagement

A Commitment to Engagement

NDLC Parent Advisory Committee	4K, 5K, 1 Open Enrolled Out Families Child Care Survey	Park Charter School Staff Meeting
Landreman's - Coffee & Conversation	Comprehensive Facilities Study Results	All KASD Staff Update and Feedback
High School Parent Advisory Committee		River View Middle School Staff Meeting
North Fond du Lac Schools Site Visit	Kaukauna Alumni Association	High School Staff Meeting
Shiocton Schools Site Visit	Kaukauna Employers Child Care Survey	KHS Student Council
Facilities Planning Process - KASD Staff	Kaukauna Business Leaders Roundtable	KHS National Honor Society
Oakfield Schools Site Visit	Victor Haen Staff Meeting	Community Conversation #1
Tanner Parent Advisory Committee	Tanner Staff Meeting	Community Conversation #2
Victor Haen Parent Group - NEST	Park Charter School Governance Council Meeting	Community Conversation #3
4K, 5K, 1 KASD Families Child Care Survey	Applied Population Study Results	Community Conversation #4
KASD Staff Child Care Survey	Electa Quinney Staff Meeting	



What to Expect Tonight

1. Work together to establish some guiding principles that will inform the District's long-range facilities plan
2. Provide feedback on a few of the critical concepts that will influence the District's long-range facilities plan
3. Small group conversations to value all voices and perspectives. All feedback will be captured by facilitators.

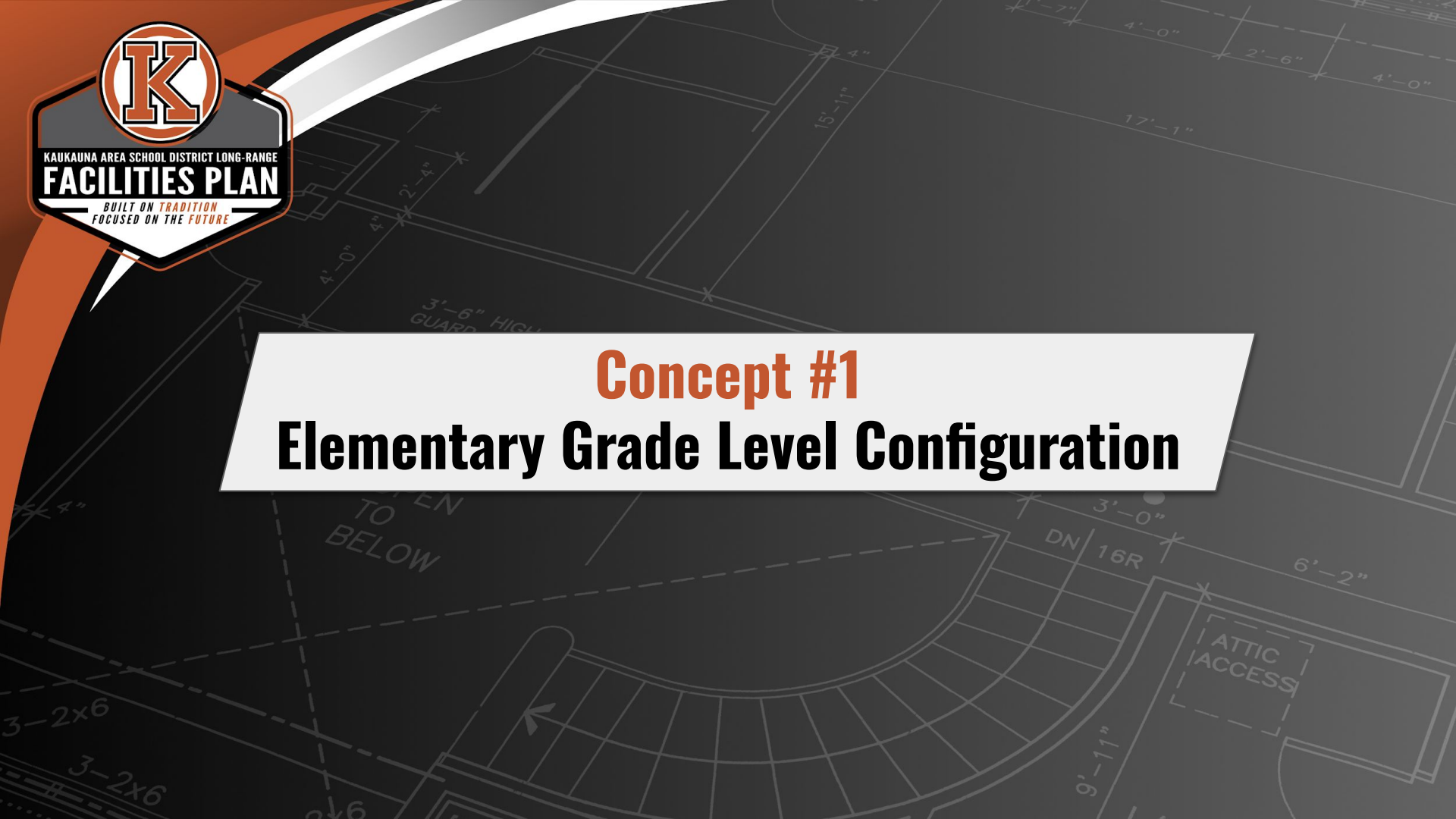


KAUKAUNA AREA SCHOOL DISTRICT LONG-RANGE

FACILITIES PLAN

BUILT ON TRADITION
FOCUSED ON THE FUTURE

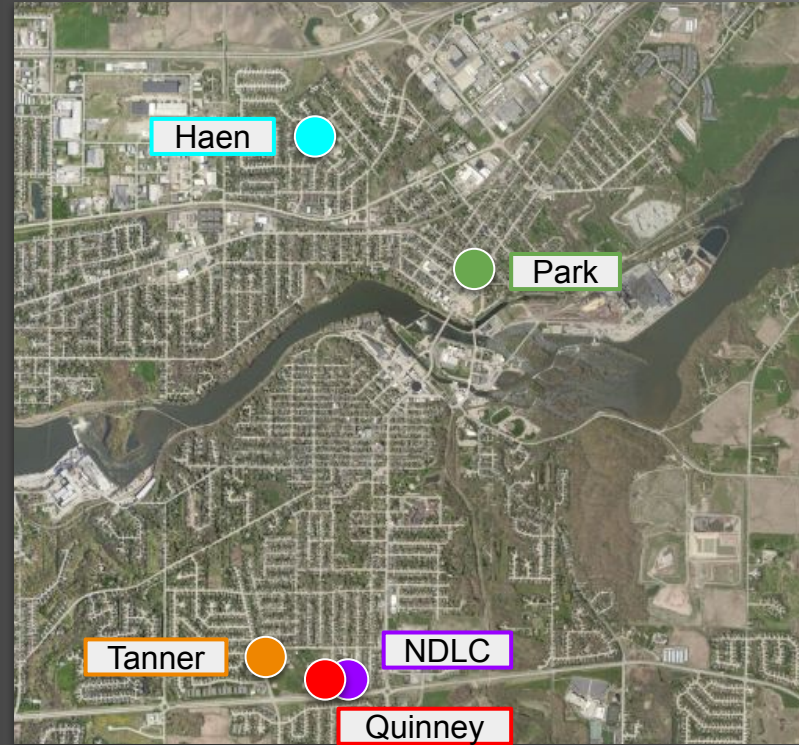
Concept #1 Elementary Grade Level Configuration





Elementary Grade Level Configuration

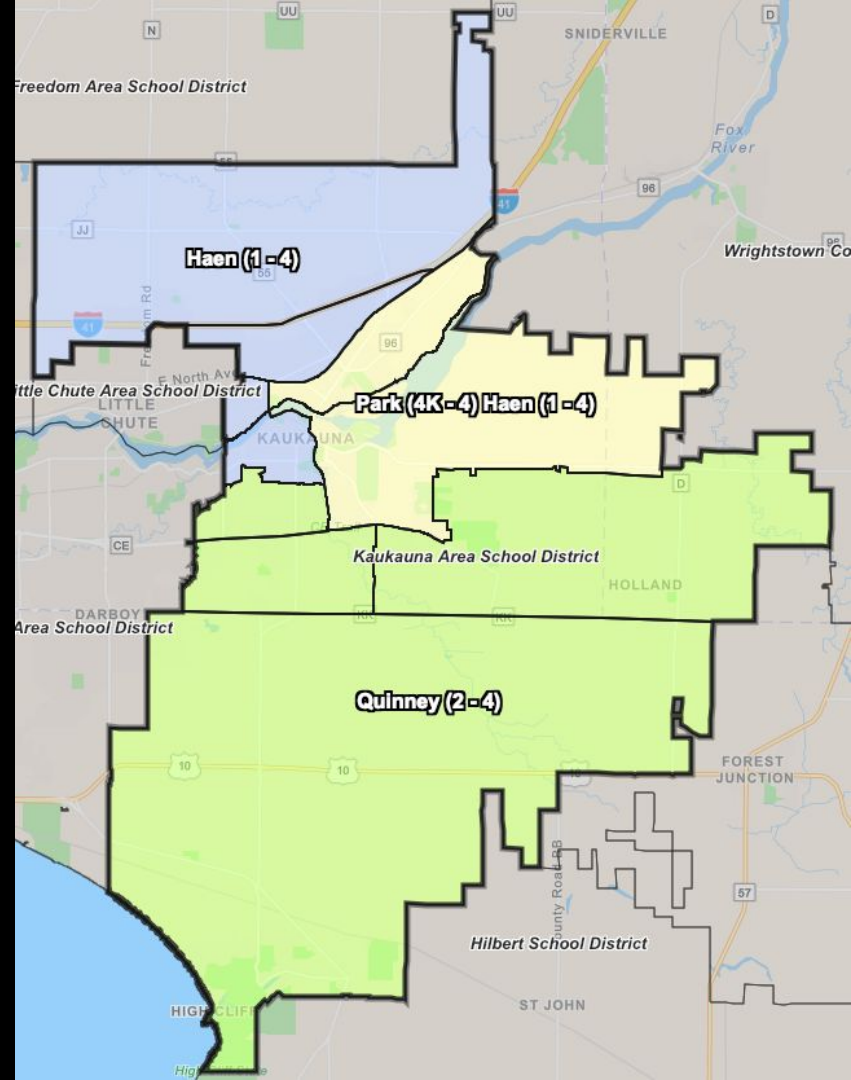
Tanner	4K-5K	Haen attendance area
	4K-1	Quinney attendance area
Quinney	2-4	
Haen	1-4	
NDLC	4K-4	Charter school * No defined attendance area
Park	4K-4	Charter school



BUILT ON TRADITION. FOCUSED ON THE FUTURE.

Northside Elementary Experience

- A student living in the Haen attendance area, will attend 4K & 5K at Tanner, which is in the Quinney attendance area.
- A student living in the Park attendance area, will attend Park, but if there is not room, he/she will attend Haen. However, he/she will start 4K & 5K at Tanner, which is in the Quinney attendance area.
- In 1st grade, a student living in the Haen attendance area (or the Park attendance area but couldn't get into Park) will transition from Tanner to Haen, while 1st grade students who live in the Quinney attendance area will continue to attend Tanner for one more year.



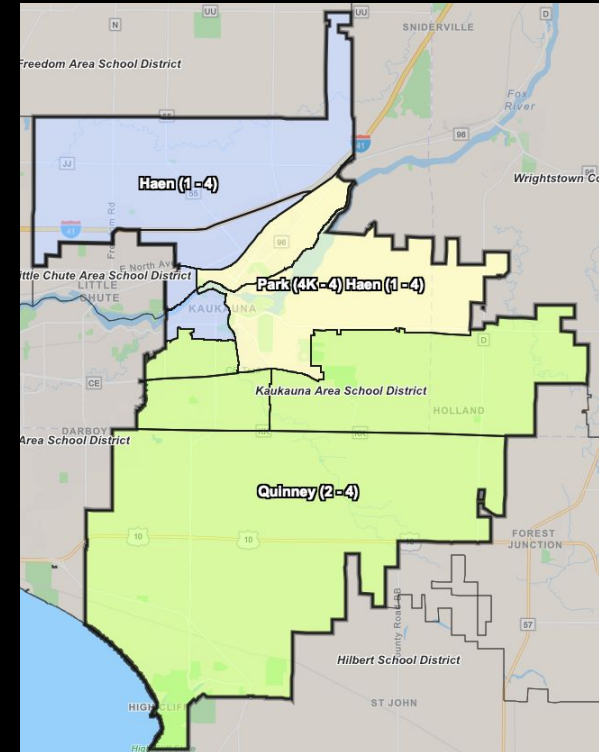
Elementary Grade Level Configuration

Northside School Experience

	In Haen attendance area	In Park attendance area if there is room at Park	In Park attendance area if there is not room at Park
4K	Tanner	Park	Tanner
5K	Tanner	Park	Tanner
1	Haen	Park	Haen
2	Haen	Park	Haen
3	Haen	Park	Haen
4	Haen	Park	Haen

Southside School Experience

4K	Tanner
5K	Tanner
1	Tanner
2	Quinney
3	Quinney
4	Quinney



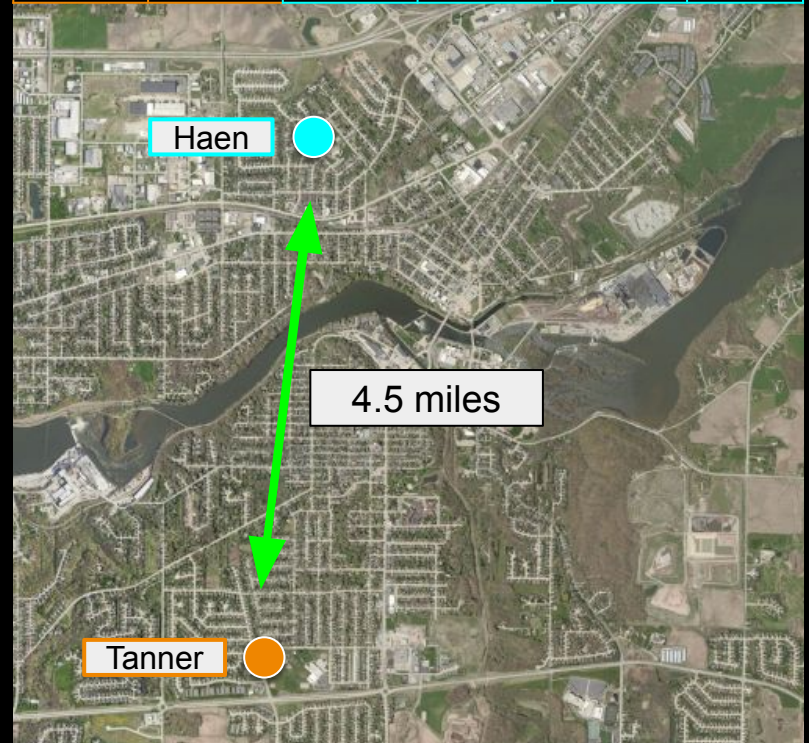
Southside Elementary Experience

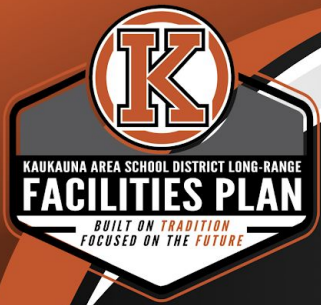
4K	5K	1	2	3	4
Tanner	Tanner	Tanner	Quinney	Quinney	Quinney



Northside Elementary Experience

4K	5K	1	2	3	4
Tanner	Tanner	Haen	Haen	Haen	Haen

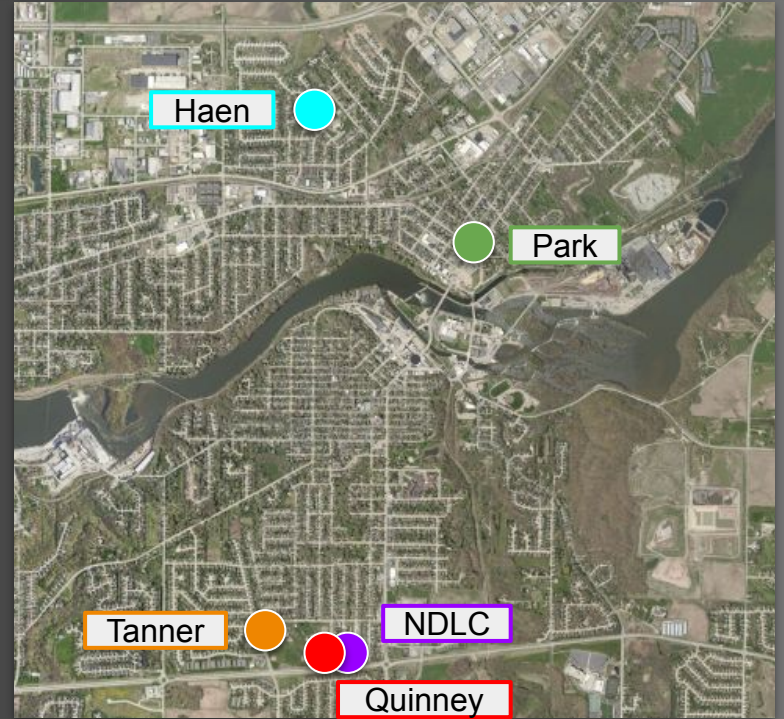




Elementary Grade Level Configuration

2 Key Questions

1. As a first step to address configuration, should the District add grades 4K and 5K to Victor Haen Elementary School?
2. What are the most important factors that need to be considered as the District evaluates elementary grade level configurations?

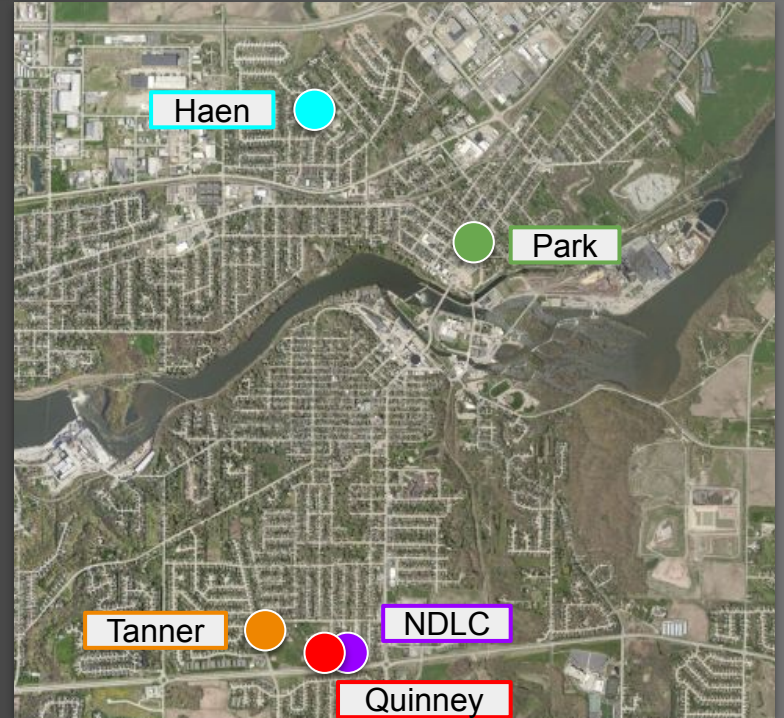




Elementary Grade Level Configuration

2 Key Questions

1. As a first step to address configuration, should the District add grades 4K and 5K to Victor Haen Elementary School?
2. What are the most important factors that need to be considered as the District evaluates elementary grade level configurations?

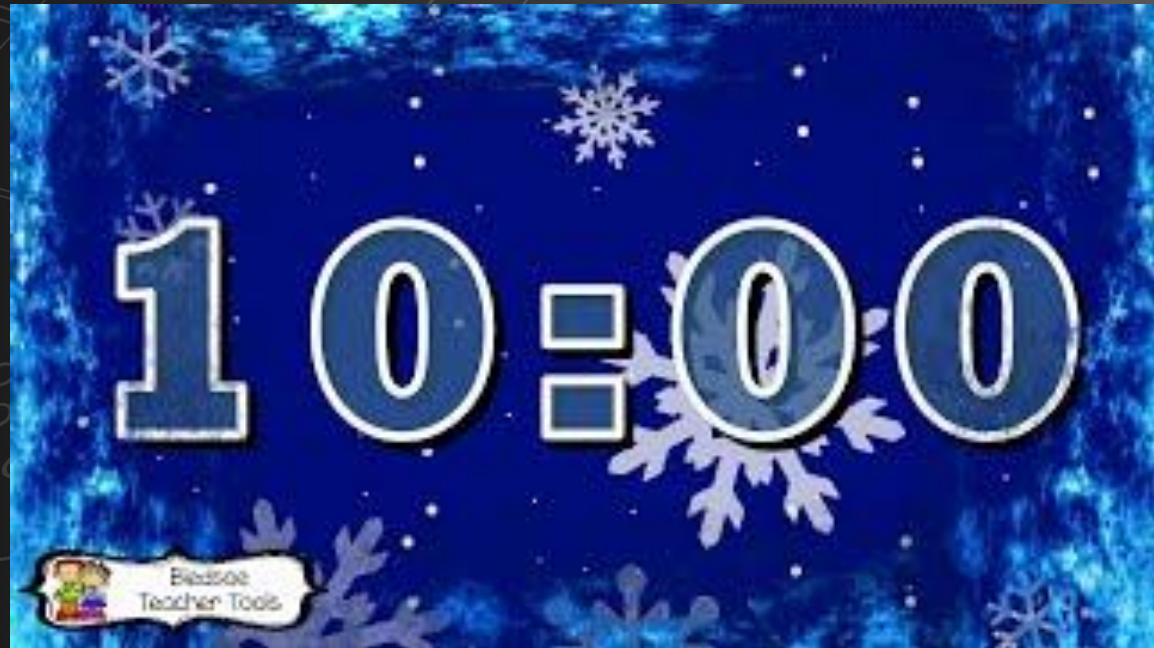


Full Group Sharing



KAUKAUNA AREA SCHOOL DISTRICT LONG-RANGE
FACILITIES PLAN

*BUILT ON TRADITION
FOCUSED ON THE FUTURE*





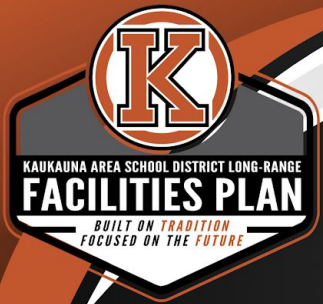
KAUKAUNA AREA SCHOOL DISTRICT LONG-RANGE

FACILITIES PLAN

BUILT ON TRADITION
FOCUSED ON THE FUTURE

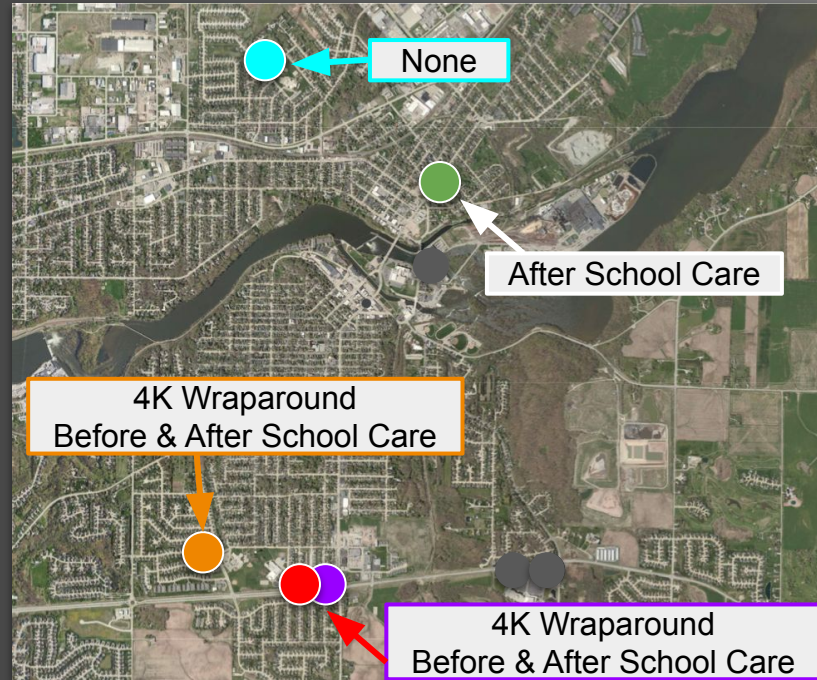
Concept #2 Expanding Child Care Services





Current School Age On-Site Child Care Services Offered

	4K Wraparound	Before School	After School
Haen			
Park			X
Quinney & NDLC	X	X	X
Tanner	X	X	X





Child Care Needs in Our Community

December 2023 Surveys
615 Total Survey Respondents
(Families, Employers, Staff)

**Local
Employers**

63.5%
(52 responses)

Lack of child care services
has impacted ability to recruit
& retain staff

**KASD
Families**

66%
(285 responses)

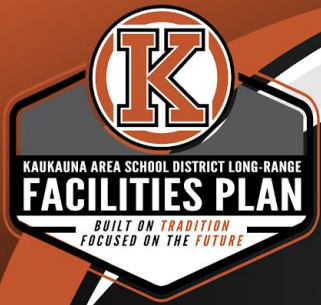
There is not an
adequate supply of
child care in our area.

**KASD
Staff**

86%
(278 responses)

School-based child care
services would be effective for
staff recruitment & retention

BUILT ON TRADITION. FOCUSED ON THE FUTURE.



Child Care Needs in Our Community

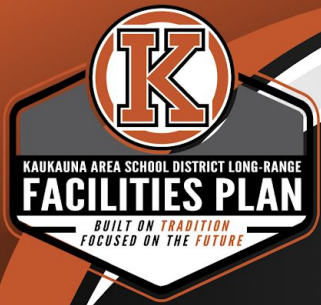
**KASD Families
Anticipating Child
Care Needs Next
Year**

96%
(150 of 156)

Would be “Very Likely” or “Likely” to consider enrolling their child in a District-provided child care option

Top 4 Barriers

1. **Cost**
2. **Availability**
3. **Convenient Location**
4. **Quality Care**

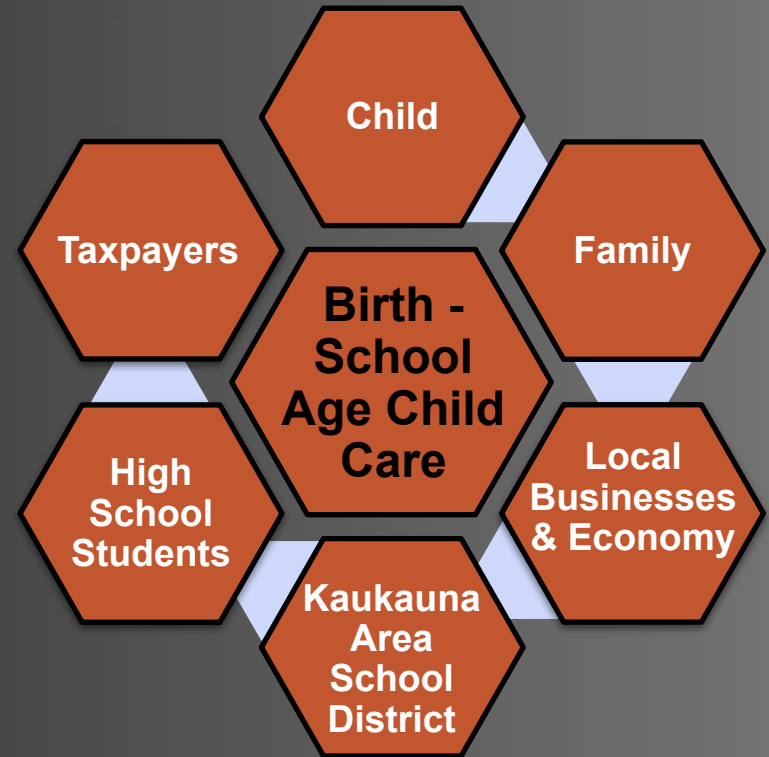


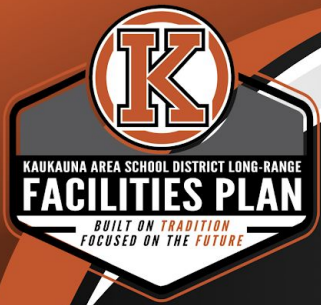
Possible Approaches to Address the Need

Birth-School Age Child Care Facility

Feedback from other Districts...

1. Helped meet community need
2. Reduced open enrollment out
3. Students better prepared to transition to school
4. Increased staff retention
5. Positive impact on staff recruitment
6. Created career path opportunities for high school students through Youth Apprenticeships and work-based learning





Expanding Child Care Services

2 Key Questions

1. Should the District look to expand the current level of child care services offered in order to help meet the community need?
2. What are the most important factors that need to be addressed as the District considers expanding the level of child care services provided?



Expanding Child Care Services

2 Key Questions

1. Should the District look to expand the current level of child care services offered in order to help meet the community need?
2. What are the most important factors that need to be addressed as the District considers expanding the level of child care services provided?

Full Group Sharing



KAUKAUNA AREA SCHOOL DISTRICT LONG-RANGE
FACILITIES PLAN

*BUILT ON TRADITION
FOCUSED ON THE FUTURE*





KAUKAUNA AREA SCHOOL DISTRICT LONG-RANGE

FACILITIES PLAN

BUILT ON TRADITION
FOCUSED ON THE FUTURE

Concept #3 River View Middle School



Current & Future Challenges

Educational Adequacy

CATEGORY	River View Middle School
Site	2.29
Safety	1.86
Core Learning Areas	2.63
Specialty Learning Areas	2.00
Intervention / Resource Areas	3.00
Breakout / Collaboration Areas	2.00
Common Areas	3.14
Office / Administrative Areas	2.86
Average	2.47

- 5 EXCELLENT:** All Spaces Meet or Exceed Criteria
- 4 GOOD:** Most Spaces Meet Most Criteria
- 3 FAIR:** Some Spaces Meet Criteria, Some Spaces Do Not
- 2 POOR:** Few Spaces Meet Criteria, Or Criteria Is Minimally Met
- 1 VERY POOR:** Spaces Do Not Meet Criteria
- N/A NOT APPLICABLE:** Category Or Criteria Does Not Apply To Spaces

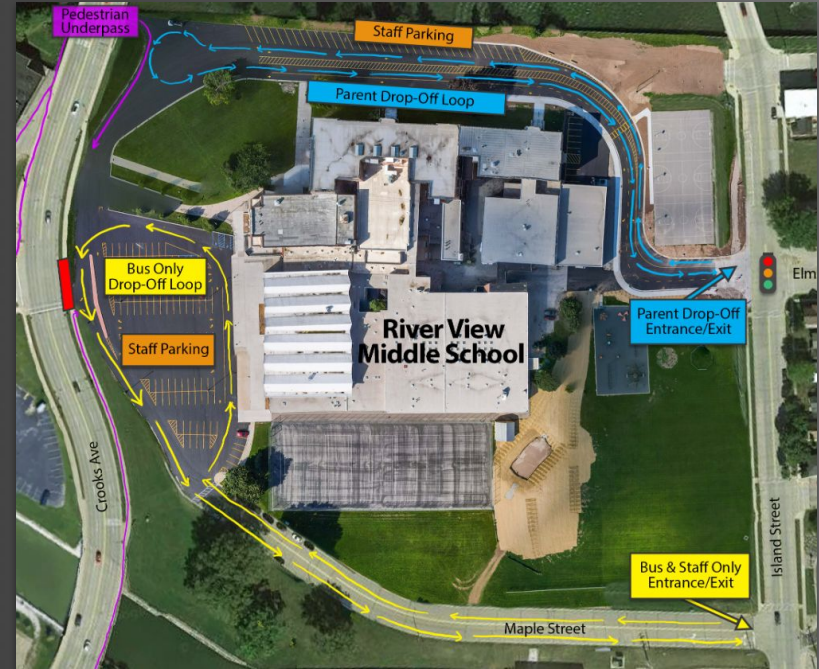


BUILT ON TRADITION. FOCUSED ON THE FUTURE.

Current & Future Challenges Building Conditions

Category	River View Middle School
Civil / Site (POB contributed evaluation)	2.67
ADA	2.33
Roofing	2.67
Exterior Enclosure	2.38
Interior	2.71
Miscellaneous	3.08
Electrical	3.15
Mechanical	4.33
Plumbing	3.00
Total	2.93

5	NEW: Brand New, Great Condition, Do Not Foresee A Need For Replacement
4	GOOD: Not Brand New, Functional And Does Not Need To Be Replaced
3	FAIR: Functional, Average Wear For Building Age
2	POOR: Functional, But Worn From Use
1	CRITICAL: Critical Condition, Extremely Worn / Damaged, Needs Replacement Immediately
N/A	NOT APPLICABLE: Category Or Criteria Does Not Apply To Spaces



BUILT ON TRADITION. FOCUSED ON THE FUTURE.

Historical Timeline

May
2017

\$25 million energy efficiency upgrades at River View Middle School.

- Heat & Ventilation
- Roofs
- Doors
- Windows
- LED Lighting

April
2019

Unsuccessful referendum that addressed River View challenges through a proposed renovation.

April
2022

1,188 KASD residents respond to community-wide survey.

Majority of respondents indicate that KASD should “purchase property now and plan to build a new school.”

October
2022

KASD purchases 144 acres of land for possible future development.

April
2023

225 community members participate in the Future Strong Summit.

Feedback provided to address middle school by building on District-owned land.



River View Middle School

2 Key Questions

1. Do you feel that the current River View facility is appropriate to support the long-term needs of our community's middle school students?
2. What advice would you give to the District as it evaluates the future of middle school facilities in Kaukauna?



River View Middle School

2 Key Questions

1. Do you feel that the current River View facility is appropriate to support the long-term needs of our community's middle school students?
2. What advice would you give to the District as it evaluates the future of middle school facilities in Kaukauna?

Full Group Sharing



KAUKAUNA AREA SCHOOL DISTRICT LONG-RANGE
FACILITIES PLAN

*BUILT ON TRADITION
FOCUSED ON THE FUTURE*



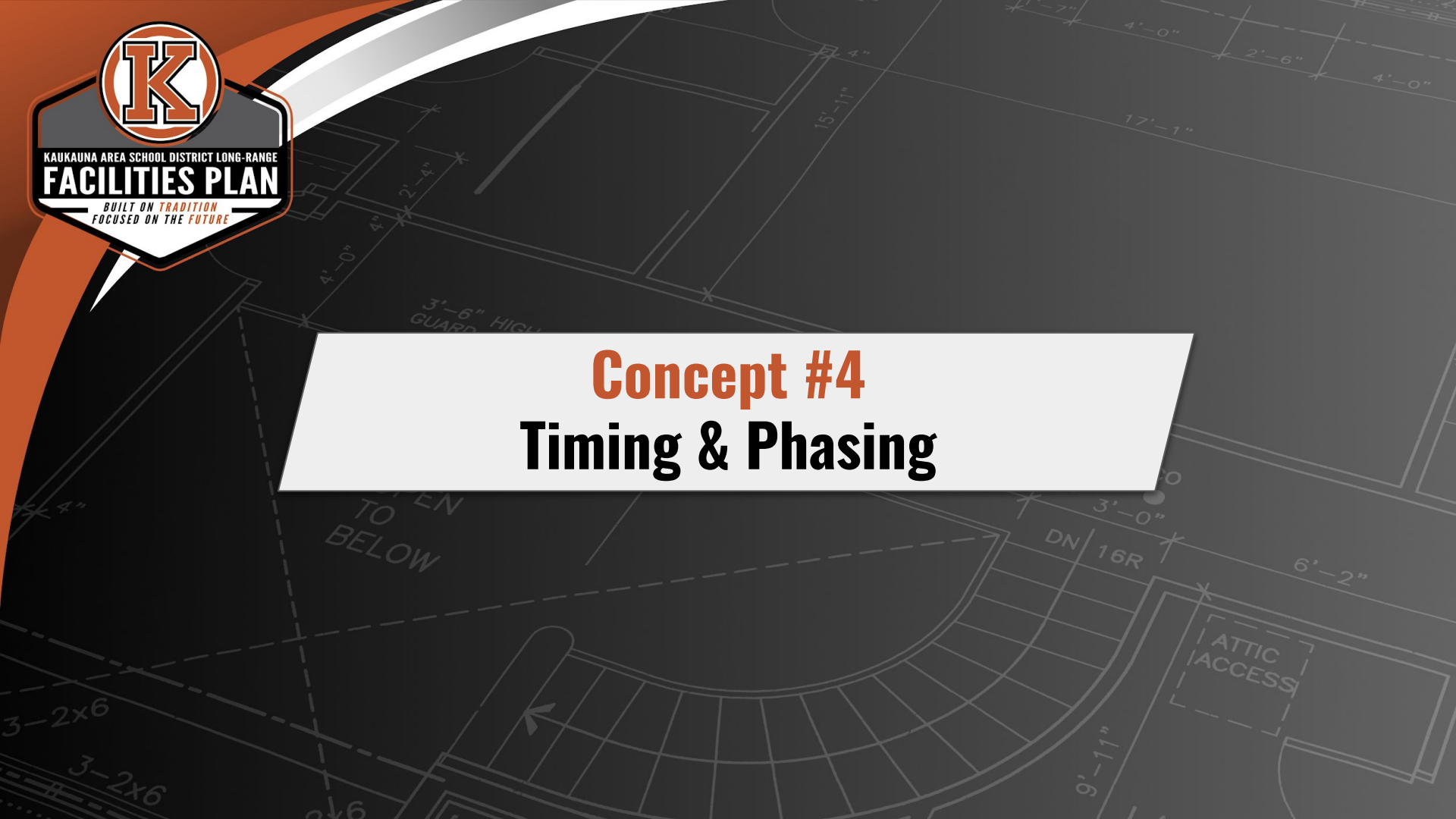


KAUKAUNA AREA SCHOOL DISTRICT LONG-RANGE

FACILITIES PLAN

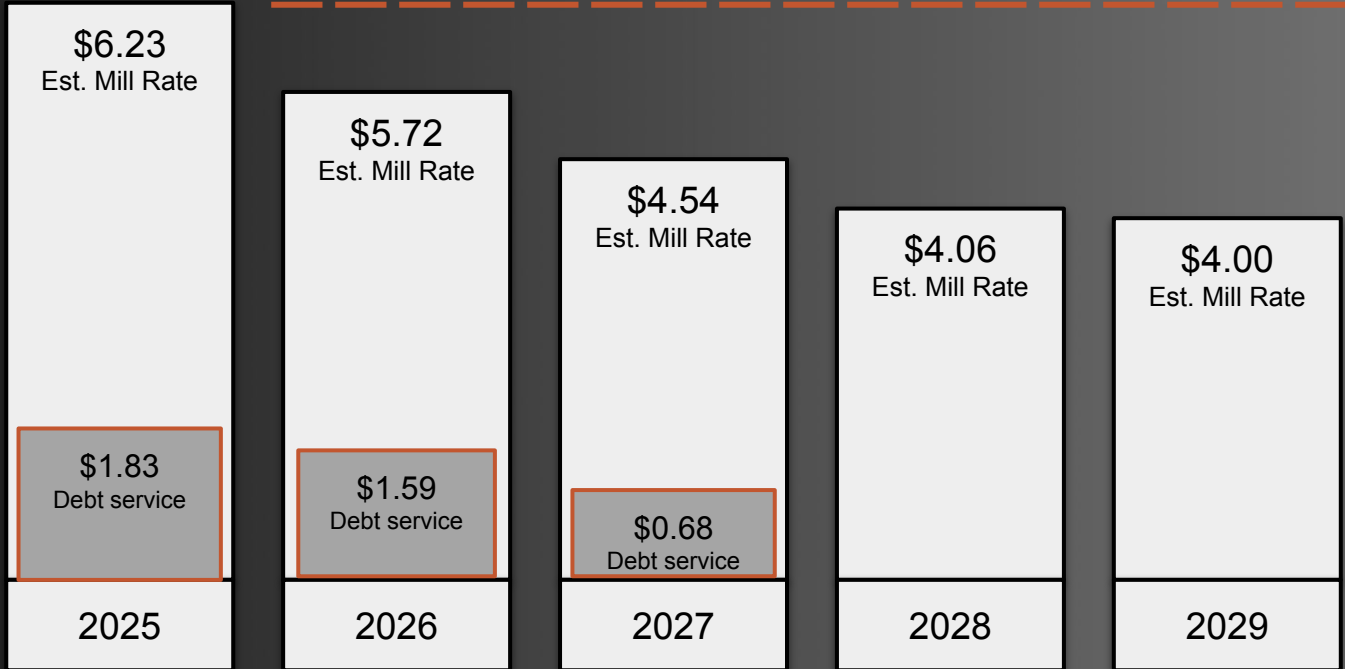
BUILT ON TRADITION
FOCUSED ON THE FUTURE

Concept #4 Timing & Phasing





A Critical Window Debt Service Drop Off



*assumptions based on current state funding.

BUILT ON TRADITION. FOCUSED ON THE FUTURE.



What Does It Mean For You?



Savings in Context

Est. \$291

Year

Est. \$24.25

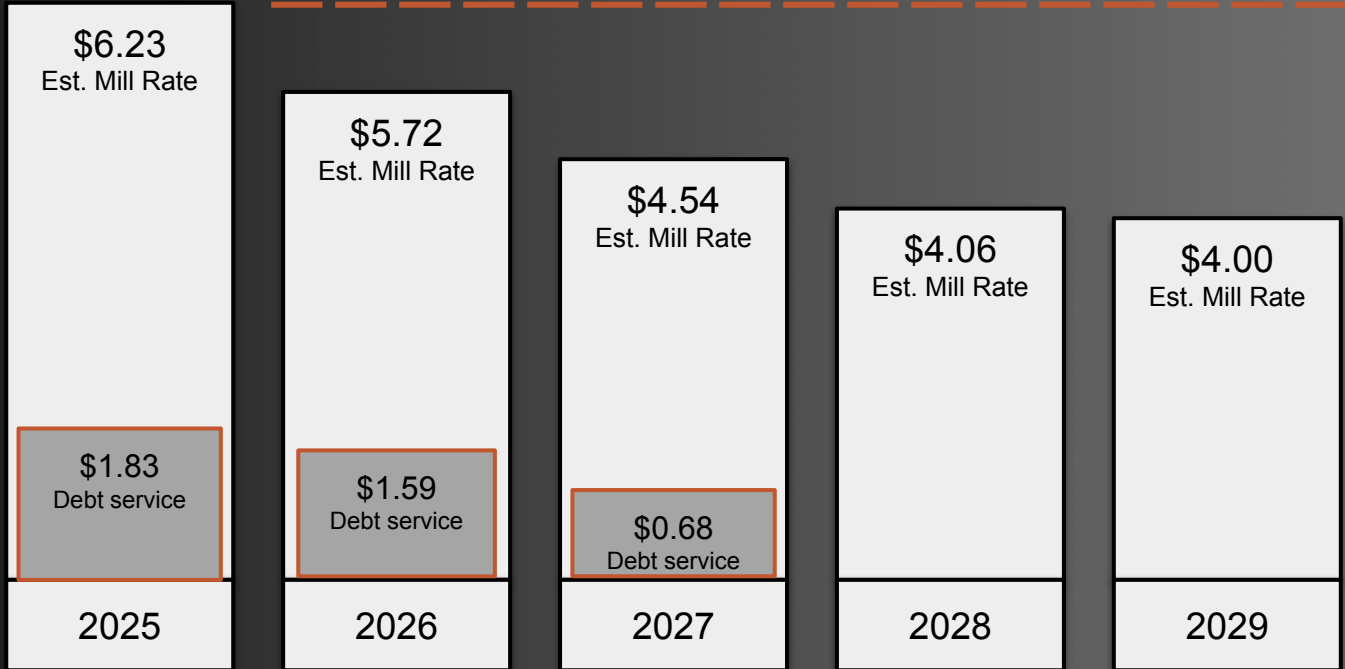
Month

*assumptions based on current state funding.

BUILT ON TRADITION. FOCUSED ON THE FUTURE.

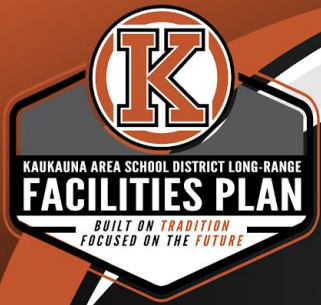


A Critical Window Debt Service Drop Off



*assumptions based on current state funding.

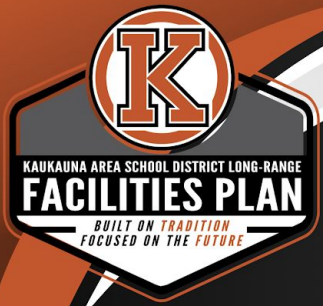
BUILT ON TRADITION. FOCUSED ON THE FUTURE.



Timing

Referendum Opportunities Prior to Debt Service Drop-Off

November 2024	<ul style="list-style-type: none">• Presidential election• Most comprehensive community input (high voter turnout)
April 2025	<ul style="list-style-type: none">• General election• Lower voter turnout• No fall election opportunity
April 2026	<ul style="list-style-type: none">• General election• Lower voter turnout• Final opportunity before debt service drops off



Timing & Phasing

Phase 1
Elementary Focus



Phase 2
Middle/High School
Focus
(3-5 years?)

OR

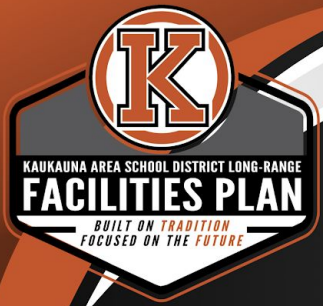
Phase 1
Middle/High School
Focus



Phase 2
Elementary Focus
(Year?)

OR

Comprehensive Approach
Address all K-12 Needs



KASD Long-Range Facilities Plan

Final Question

Overall, what feedback would you give the District as we consider next steps to develop our long-range facility plan?



KASD Long-Range Facilities Plan

Final Question

Overall, what feedback would you give the District as we consider next steps to develop our long-range facility plan?



KAUKAUNA AREA SCHOOL DISTRICT LONG-RANGE

FACILITIES PLAN

*BUILT ON TRADITION
FOCUSED ON THE FUTURE*

Next Steps

OPEN
TO
BELOW

SA CO
O ●
3'-0"

DN 16R

ATTIC
ACCESS

3-2x6

3-2x6

2x6

9'-11"

6'-2"

7'-2"

3'-6" HIGH
GUARD

4'-0"
4'-0"
2'-4"

15'-11"
4"

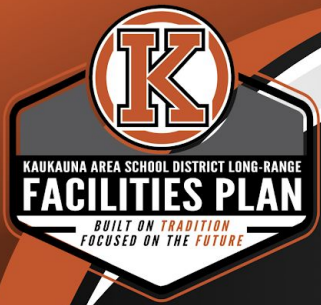
17'-1"

2'-6"

4'-0"

4'-0"





Future Community Conversations

Tuesday, February 6	6:00 PM - 8:00 PM	River View Middle School
Thursday, February 15	6:00 PM - 7:30 PM	Virtual
Friday, February 16	8:30 AM - 10:00 AM	Virtual

BUILT ON TRADITION. FOCUSED ON THE FUTURE.



Next Steps

1. Compile all data and feedback
2. Develop preliminary option(s) and costing
3. Community-wide survey
4. Analyze survey results and develop future steps
5. Share Information!



KAUKAUNA AREA SCHOOL DISTRICT LONG-RANGE
FACILITIES PLAN

*BUILT ON TRADITION
FOCUSED ON THE FUTURE*



THANK YOU!